

Top View

### KEY FEATURES

- Supports one AMC.1, AMC.2, AMC.3 and/or AMC.4
- Allows to put in double width AMC modules
- PCIe x8 lanes to the PC style edge connectors
- Optional VT002 IPMI Management Controller
- AMC.2 GbE to RJ-45
- AMC.3 to SATA headers
- On board 100Mhz HCSL Clock for FCLKA
- MLVDS drivers for TCLKA, TCLKB, TCLKC and TCLKD via SMB connectors as input or output
- IPMI 2.0 compliant
- Connectors to access the I<sup>2</sup>C bus
- Can run standalone without the host PC
- RoHS compliant

The PCI107 allows testing of AMC.1, AMC.2, AMC.3 and/or AMC.4 modules in a PC environment (or stand alone) during development and manufacturing; reducing the costs associated with maintaining different platforms.

The PCI107 is a PCIe edge style carrier with x8 lanes routed to from the AMC to the PCIe edge style. The AMC.1 module can connect directly to the host PC PCIe bus. The AMC.2 module GbE ports are routed to RJ-45s. The AMC.3 differential pairs are routed to two SATA connectors. The PCI107 is available with a socket for an optional VT002 Shelf Manager which can test the AMC IPMI management functionality. The Dual I<sup>2</sup>C bus connectors allow connecting any I<sup>2</sup>C bus to any other I<sup>2</sup>C bus as well as being able to debug and monitor the I<sup>2</sup>C bus traffic.

Provides two current sense resistors to measure the payload power as well as the management power of the AMC.

The PCI107 can be powered on the bench without the host PC.

VadaTech can modify this product to meet special customer requirements without NRE (minimum order placement is required).

**AdvancedMC™**

# Carrier for AMC Modules

## SPECIFICATIONS

Architecture		
Physical	Dimensions	Full size PCIe bus format
		Width: 8.865 in. (225 mm)
		Depth: 9.5 in. (241 mm)
Product	PCIe Carrier	Carrier for AMCs
Standards		
AMC	Type	AMC.1, AMC.2, AMC.3 and/or AMC.4
PCIe	Lanes	x8
Configuration		
Power	PCI107	4 W with the VT002 installed
Environmental	Temperature	Operating Temperature: 0° to 65° C
		Storage Temperature: -40° to +90° C
Environmental	Relative Humidity	5 to 95 percent, non-condensing
	Style	AMC B+
Interface Connectors	AMC.1	To PCIe edge
	AMC.2	To RJ-45 (through transceiver)
	AMC.3	To two SATA connectors
	Clocks	FCLKA, TCLKA, TCLKB, TCLKC and TCLKD
	Shelf Manager	VT002
Other		
MTBF	MIL Spec 217-F >205,000 Hrs. (without the Fan)	
Certifications	Designed to meet FCC, CE and UL certifications where applicable	
Standards	VadaTech is certified to both the ISO9001:2000 and AS9100B:2004 standards	
Compliance	RoHS	
Warranty	Two (2) years	
Trademarks and Logos	The VadaTech logo is a registered trademark of VadaTech, Inc. Other registered trademarks are the property of their respective owners. AdvancedMC™ and the AdvancedTCA™ logo are trademarks of the PCI Industrial Computers Manufacturers Group. All rights reserved. Specification subject to change without notice.	

# Carrier for AMC Modules

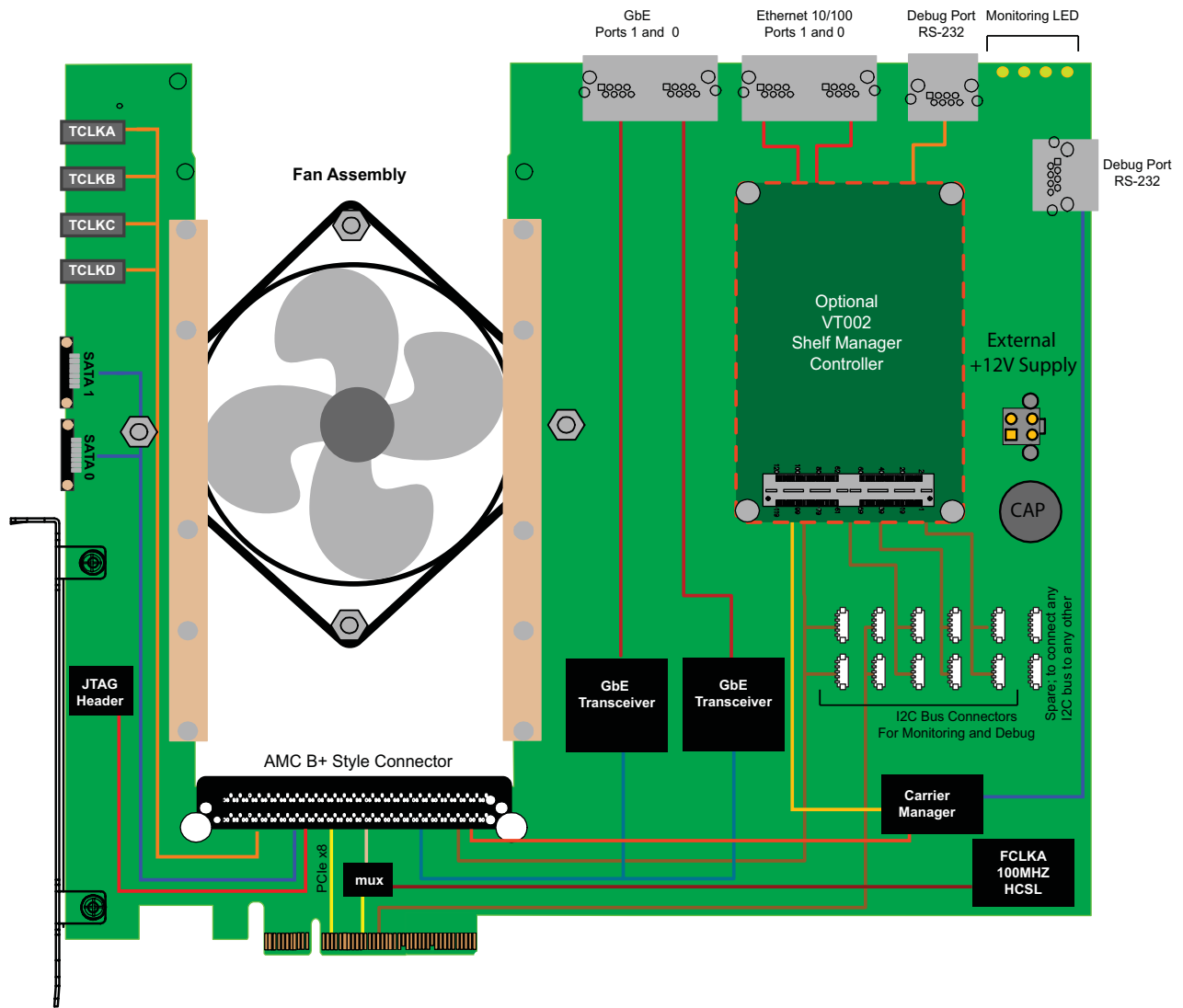


FIGURE 1. PCI107 Functional Block Diagram

# Carrier for AMC Modules

## ORDERING OPTIONS

PCI107 - A00 - 000 - 00J

**A = Shelf Manager**

0 = None

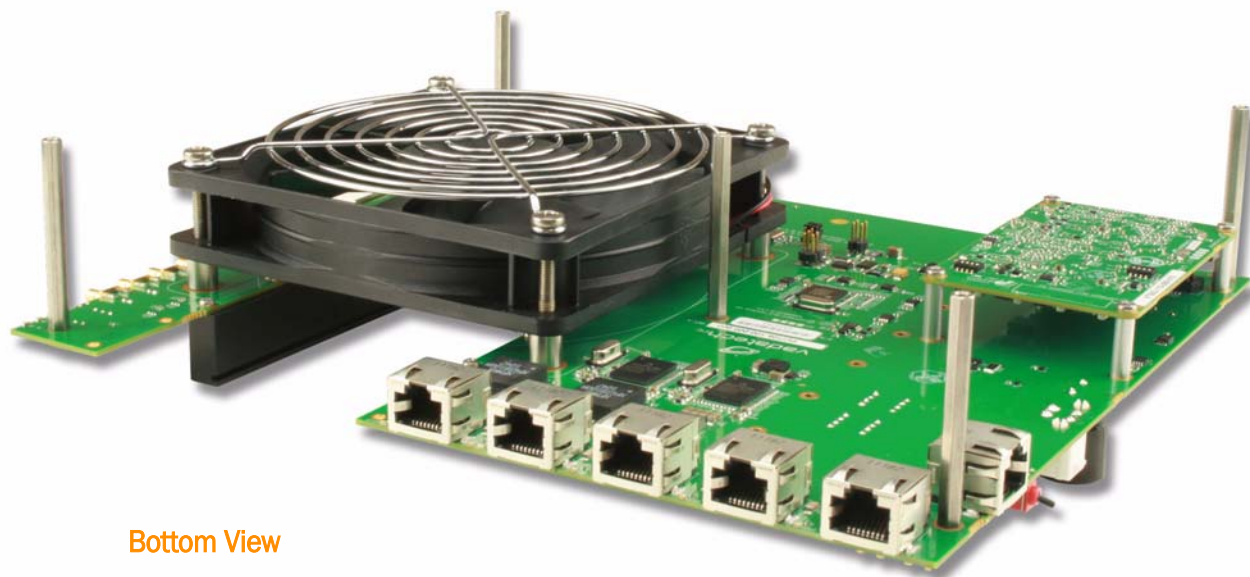
1 = With the VT002 Shelf Manager

**J = Conformal Coating**

0 = None

1 = Humiseal 1A33 Polyurethane

2 = Humiseal 1B31 Acrylic



Bottom View



Document No.4FM430-05 REV. 01 Date: November 2012 pass one